

xFold™ Spy

Unbox and fly in under 2 minutes. Compact ISR platform for small sensors.

The xFold™ Spy features power and portability, designed for small cameras and sensors. Configurable as Quad, Hexa, x8 or x12 for law enforcement, industrial, commercial, government, and military applications. Its folding carbon fiber frame collapses to a backpack-portable size, enabling rapid deployment from vehicles, rooftops, or forward operating bases. The modular motor and propulsion architecture allows operators to scale redundancy and thrust based on mission requirements, while the universal payload rail accommodates a wide range of EO/IR sensors and communication relays. With its compact form factor and quick-deploy capability, the Spy is ideal for first responders and tactical teams who need airborne ISR on demand without dedicated launch infrastructure.



DRONE SPECIFICATIONS

DIMENSIONS (OPEN)	500 × 455 mm	MAX SPEED	40 mph
DIMENSIONS (FOLDED)	535 × 225 mm	MAX ENDURANCE	30 min
HEIGHT	230 mm (bottom to motor top)	MAX CEILING	10,000 ft
MAX GROSS TAKEOFF	35 lb	MAX RANGE	20 km
PAYLOAD CAPACITY	5 lb	CONFIGURATIONS	Quad, Hexa, x8, x12

● INTEGRATED CAMERA SYSTEM



GREMSY LYNX



FLIR HADRON 640

BASE SPEC



UNI-CO TECH 3-AXIS

GENERAL

WEIGHT	320-365 g	56 g	188 g
DIMENSIONS	80 × 96 × 60 mm	35 × 45 × 49 mm	50 × 81 × 57 mm
POWER	15-18 W	1.8 W	< 5 W
IP RATING	IP54	IP54	IP54

VISIBLE CAMERA

SENSOR	1/2.3" CMOS, 12.3 MP	64 MP	1/1.8" CMOS, 20 MP (×2)
HFOV	60.4°	67°	64° (W) / 16° (T)
OPTICAL ZOOM	–	–	4.6x
DIGITAL ZOOM	10x	–	9.2x
MAX HYBRID ZOOM	–	–	40x
VIDEO	4K @ 30fps	Full res @ 60fps	2560×1440 @ 30fps

INFRARED THERMAL

RESOLUTION	640 × 512	640 × 512	640 × 480
FRAME RATE	25-30 Hz	60 Hz	30 fps
NETD	≤50 mK	≤50 mK	–
SPECTRAL BAND	8-14 μm	8-14 μm	8-14 μm
HFOV	32°	32°	32°
RADIOMETRY	Yes (up to 500°C)	Yes (±5°C)	–

GIMBAL

GIMBAL TYPE	3-axis (included)	None (OEM)	3-axis (included)
PITCH RANGE	-130° to +40°	–	-30° to +90°
YAW RANGE	±165°	–	±165°

INTERFACE

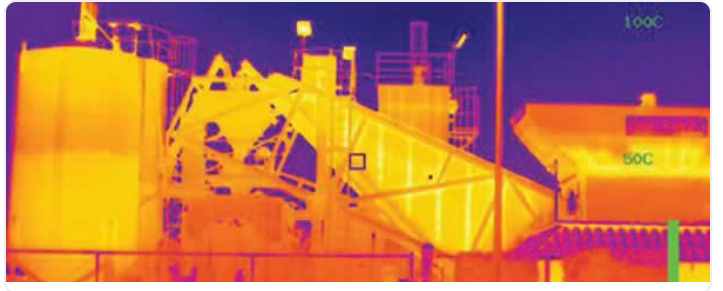
VIDEO OUTPUT	HDMI / IP	USB 3.0 / MIPI	HDMI 4K30 / Ethernet
CONTROL	MAVLink	MIPI / I²C	UART / MAVLink
AI / TRACKING	Yes	Prism AI ready	Yes
IMAGE FUSION	–	–	Yes

NOTES

Complete turnkey ISR payload with integrated gimbal. Plug-and-play for ArduPilot/IPX4.

Ultra-compact OEM module (56g). Requires separate gimbal and compute platform. Best SWaP.

Lightest complete gimbal (188g) with true optical zoom and thermal/EO fusion.



● INCLUDED CONTROLLER



Herelink Blue V1.1 Controller

MPN: HLBC-1001

Designed and manufactured in collaboration between NW Blue and CubePilot. A HD Video Transmission System, using PineSync technology based on S1 processor. It is an easy-to-use device for sending HDMI video and audio signals, at an affordable pricing. Signal transmission range up to 20KM with minimum latency 110ms. Two HDMI inputs. Supports 720p 30fps, 1080p 30fps / 60fps video format.

CONTROLLER SPECIFICATIONS

TRANSMISSION RANGE	Up to 20 km	VIDEO FORMATS	720p 30fps, 1080p 30/60fps
LATENCY	110 ms minimum	PROCESSOR	8-core S1 with Mali-T860 GPU
VIDEO INPUTS	Two HDMI inputs	UPDATES	OTA via WiFi